



Triad® T5 And T5HO Electronic Ballasts

**The smallest cross section
with the widest range of features**

The new Triad® T5 and T5HO ballast family from Universal Lighting Technologies, Inc., incorporates the latest in circuit design and manufacturing technology. These ballasts offer the industry's smallest cross section for maximum fixture design flexibility. Universal voltage circuitry reduces inventory and ensures you have the right voltage ballast every time.

The Triad® T5 and T5HO ballast family includes products for all of the new linear T5 lamps, both standard and high output. These popular new lamps combined with the Triad® T5 ballasts are ideal for the intricate applications being developed for indirect and pendant mount fixtures as well as new recessed fixtures for direct lighting. The small cross section allows ballasts to be designed into fixture applications never before possible.

Triad® T5 ballasts offer program rapid starting to maintain long lamp life, even in short cycle operations. They also feature an end-of-lamp-life shutdown circuit with an auto reset feature that allows new lamps to operate when installed without having to cycle the input power.

Features and Benefits

- ✂ Smallest cross section available (1.0" x 1.18")
 - Ideal for thin profile fixtures
 - Optimizes luminaires for T5 and T5HO lamp optics
- ✂ Universal input voltage (108–305 volts, 50/60Hz)
 - Reduces inventory costs and requirements
 - Correct voltage is always available
- ✂ Program rapid start for long lamp life
 - Ideal for long and short cycle applications
- ✂ Low temperature starting: 0° F, -18° C
 - Ideal for refrigeration installations
- ✂ End-of-lamp-life shutdown circuitry
 - Safely powers down lamp at end-of-life
- ✂ Auto reset after lamp replacement
 - No need to cycle power when replacing lamps



Triad® T5 and T5HO ballasts operate a variety of lamp applications.

- ✂ THD < 10%
- ✂ Lightweight
 - Easier installation
 - Minimizes suspended fixture weight
 - Reduces shipping costs

T5 Standard

- ✂ Multiple lamp operation (1) or (2) lamps with one ballast
- ✂ 14, 21, and 28 watt T5 lamps

T5HO

- ✂ Supports (1) or (2) 24, 39 and 54 watt T5HO lamps
- ✂ Also supports (1) or (2) 24, 36, 50 and 55 watt Long Twin tube lamps

Triad® T5 and T5HO Electronic Ballasts

Catalog Number	Lamp Type	Qty.	Line Volts	Input Watts	Nominal Line Amps	Power Factor	Ballast Factor	Total Harmonic Distortion	Crest Factor	Wiring Dia.
B228PUNV-C										
F28T5		2	120	66	0.55	>0.98	1.00	<10%	<1.7	1
F28T5		1	120	33	0.28	>0.98	1.00	<10%	<1.7	1
F28T5		2	277	64	0.23	>0.98	1.00	<10%	<1.7	1
F28T5		1	277	33	0.12	>0.95	1.00	<10%	<1.7	1
F21T5		2	120	49	0.41	>0.98	1.00	<10%	<1.7	1
F21T5		1	120	25	0.21	>0.98	1.03	<10%	<1.7	1
F21T5		2	277	48	0.18	>0.98	1.00	<10%	<1.7	1
F21T5		1	277	25	0.10	>0.95	1.03	<15%	<1.7	1
F14T5		2	120	34	0.28	>0.98	1.00	<10%	<1.7	1
F14T5		1	120	18	0.15	>0.98	1.05	<10%	<1.7	1
F14T5		2	277	34	0.13	>0.95	1.00	<10%	<1.7	1
F14T5		1	277	18	0.07	>0.90	1.05	<15%	<1.7	1
B254PUNV-D										
F54T5HO		2	120	121	1.03	>0.98	1.00	<10%	<1.7	1
F54T5HO		1	120	64	0.54	>0.98	1.10	<10%	<1.7	1
F54T5HO		2	277	117	0.43	>0.98	1.00	<10%	<1.7	1
F54T5HO		1	277	64	0.24	>0.95	1.10	<10%	<1.7	1
FT55W/2G11		2	120	106	0.89	>0.98	0.82	<10%	<1.7	2
FT55W/2G11		1	120	58	0.49	>0.98	0.90	<10%	<1.7	2
FT55W/2G11		2	277	104	0.38	>0.98	0.82	<10%	<1.7	2
FT55W/2G11		1	277	58	0.22	>0.95	0.90	<10%	<1.7	2
FT50W/2G11		2	120	111	0.93	>0.98	1.18	<10%	<1.7	2
FT50W/2G11		1	120	60	0.50	>0.98	1.29	<10%	<1.7	2
FT50W/2G11		2	277	108	0.40	>0.98	1.18	<10%	<1.7	2
FT50W/2G11		1	277	60	0.23	>0.95	1.29	<10%	<1.7	2
B254P347-D										
F54T5HO		2	347	120	0.35	>0.98	1.00	<10%	<1.7	1
F54T5HO		1	347	64	0.19	>0.95	1.08	<10%	<1.7	1
FT55W/2G11		2	347	102	0.30	>0.98	0.80	<10%	<1.7	2
FT55W/2G11		1	347	57	0.17	>0.95	0.87	<10%	<1.7	2
FT50W/2G11		2	347	106	0.31	>0.98	1.15	<10%	<1.7	2
FT50W/2G11		1	347	58	0.17	>0.95	1.25	<10%	<1.7	2
B239PUNV-D										
F39T5HO		2	120	89	0.75	>0.98	1.00	<10%	<1.7	1
F39T5HO		1	120	47	0.39	>0.98	1.10	<10%	<1.7	1
F39T5HO		2	277	88	0.32	>0.98	1.00	<10%	<1.7	1
F39T5HO		1	277	47	0.18	>0.95	1.10	<10%	<1.7	1
F24T5HO		2	120	59	0.51	>0.98	1.15	<10%	<1.7	1
F24T5HO		1	120	32	0.27	>0.98	1.25	<10%	<1.7	1
F24T5HO		2	277	59	0.22	>0.95	1.15	<10%	<1.7	1
F24T5HO		1	277	32	0.13	>0.90	1.25	<10%	<1.7	1
FT39W/2G11		2	120	71	0.59	>0.98	0.97	<10%	<1.7	1
FT39W/2G11		1	120	38	0.32	>0.98	1.02	<10%	<1.7	1
FT39W/2G11		2	277	70	0.26	>0.95	0.97	<10%	<1.7	1
FT39W/2G11		1	277	38	0.15	>0.90	1.02	<10%	<1.7	1
B224PUNV-C*										
F24T5HO		2	120	53	0.45	>0.98	1.00	<10%	<1.7	1
F24T5HO		1	120	28	0.23	>0.98	1.06	<10%	<1.7	1
F24T5HO		2	277	52	0.19	>0.98	1.00	<10%	<1.7	1
F24T5HO		1	277	28	0.10	>0.95	1.06	<10%	<1.7	1
F39T5HO		1	120	41	0.34	>0.98	0.95	<10%	<1.7	1
F39T5HO		1	277	40	0.15	>0.98	0.95	<10%	<1.7	1
FT24W/2G11*		2	120	52	0.43	>0.98	1.00	<10%	<1.7	2
FT24W/2G11*		1	120	27	0.23	>0.98	1.05	<10%	<1.7	2
FT24W/2G11*		2	277	51	0.18	>0.98	1.00	<10%	<1.7	2
FT24W/2G11*		1	277	27	0.10	>0.95	1.05	<15%	<1.7	2

*Also operates FT24W/2G10 & FT36W/2G10 lamps.

Application and performance specification information subject to change without notification.

WIRING DIAGRAMS FOR TRIAD® T5/T5HO BALLASTS

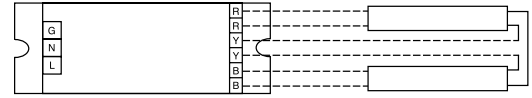


Diagram 1

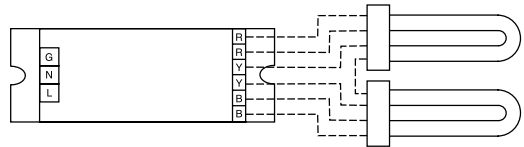
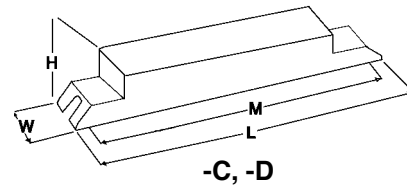


Diagram 2

Note: For single lamp operation, yellow terminals are not used.



Draw #	Overall Dimensions			Mounting Dimensions	
	L	W	H	M	
-C	14.25"	1.18"	1.0"	13.75"	
-D	16.88"	1.18"	1.0"	16.28"	



It's Easy To Reach Us...

Phone: (615) 316-5100

BallastFax: (708) 445-4444

for specifications and purchasing information 24 hours a day

Web site: www.universalballast.com

E-mail: webmaster@universalballast.com

For Technical Engineering Services (TES), application support and warranty information, call 1-800-BALLAST.

Universal Lighting Technologies

26 Century Blvd., Suite 500

Nashville, TN 37214-3683

Triad®

Universal
Lighting Technologies